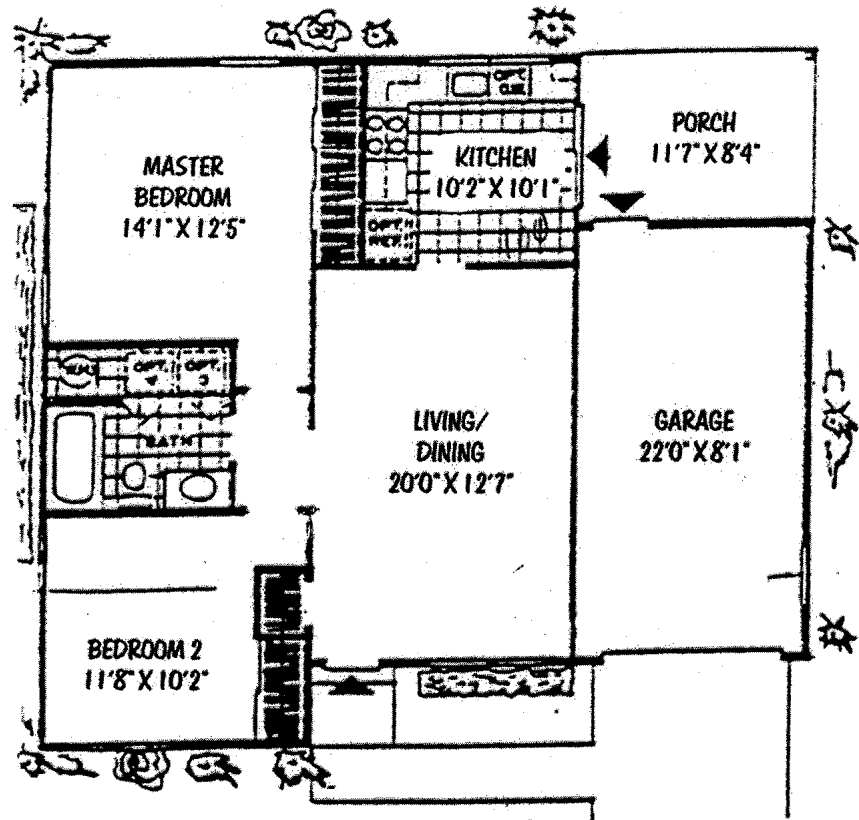


FLOORPLANS:

TWO BEDROOM MODEL WITH GARAGE AND COVERED REAR PORCH/PATIO

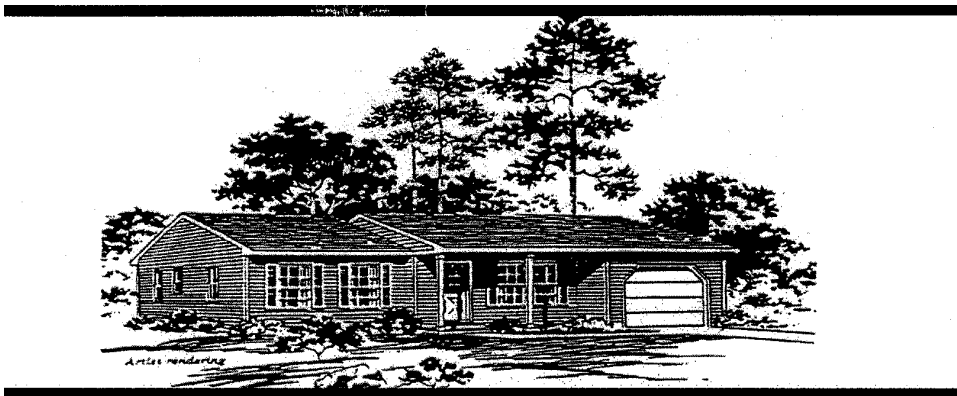


FLOOR PLAN



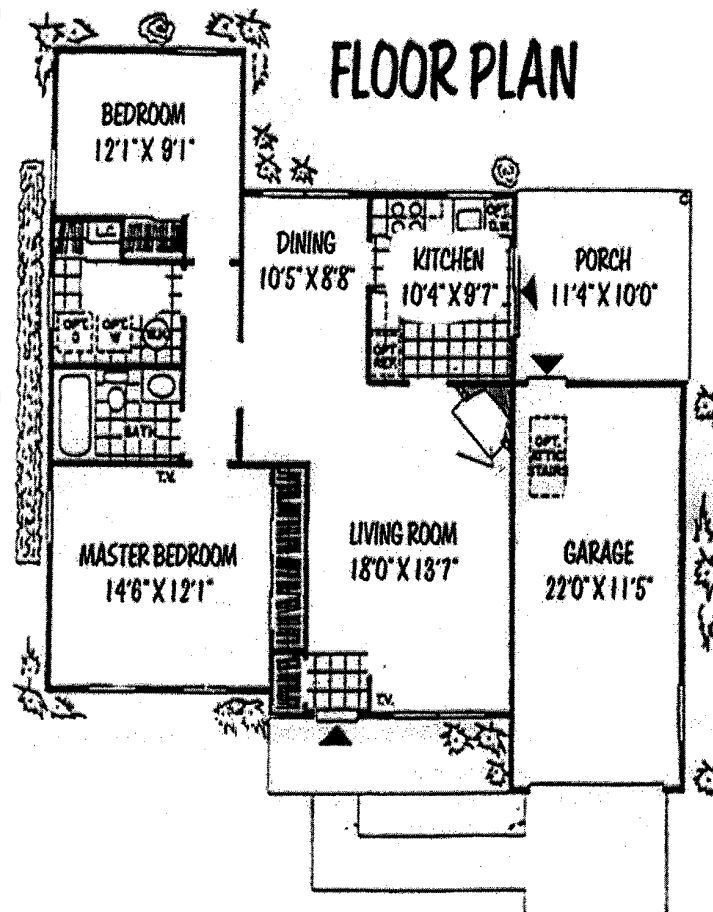
THE ANDOVER

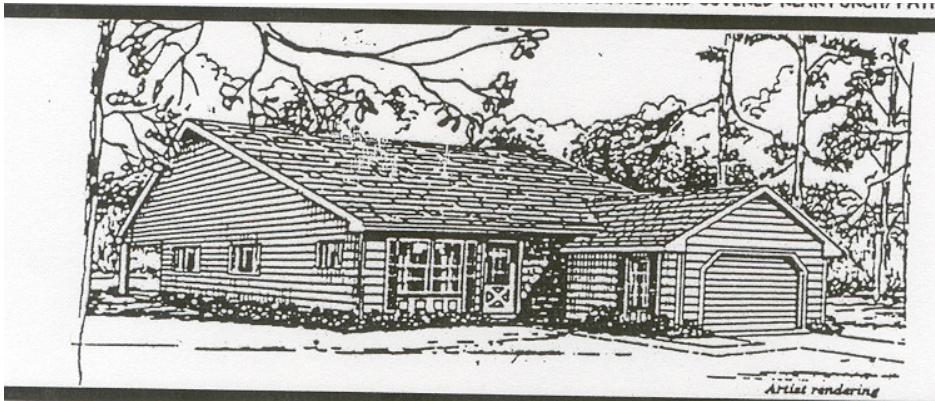
This little jewel of a home offers all of the advantages of a single home with a lot of privacy at a most economical cost. Its easy-care size provides all of amenities for gracious living : two good sized bedrooms, a bathroom, a 20 foot living-dining room, kitchen with insulated sliding glass doors to a covered porch and weather protected access to garage. Both bedrooms enjoy cross-ventilation.



THE BEDFORD

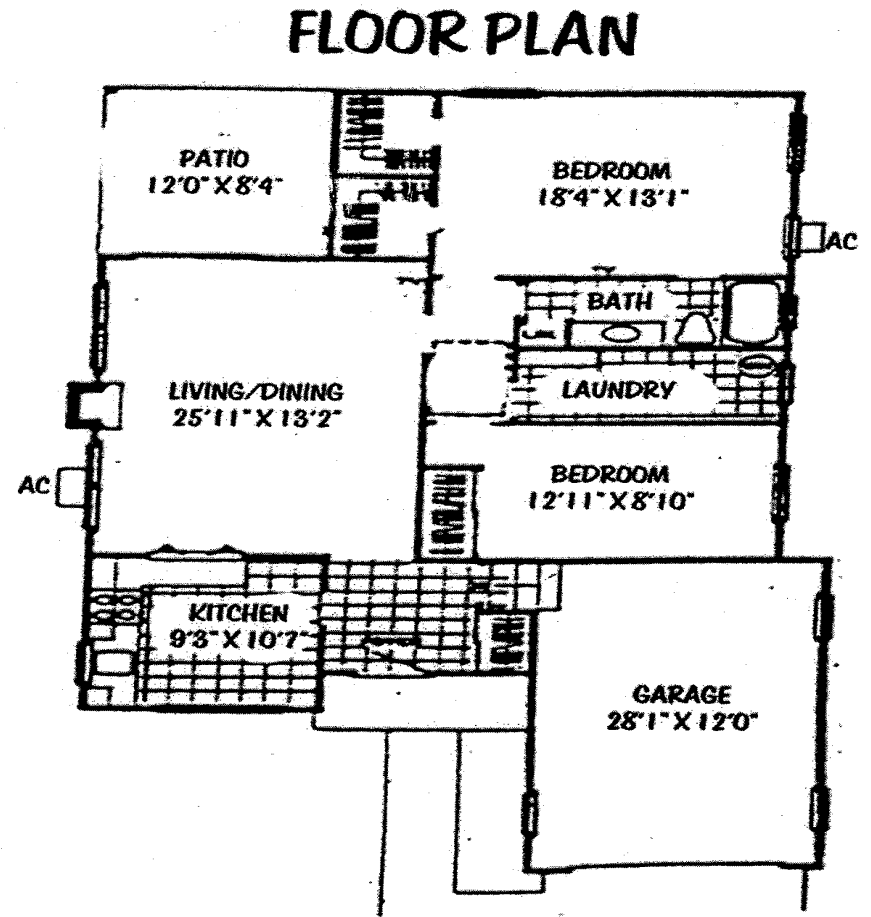
Elegance is the key note in the design of this home. The gracious covered patio leads to an entrance foyer accented with Armstrong vinyl flooring. The centrally located kitchen opens directly onto both the living and dining rooms. The separate utility-laundry room may be optionally converted to a powder room at an additional cost.

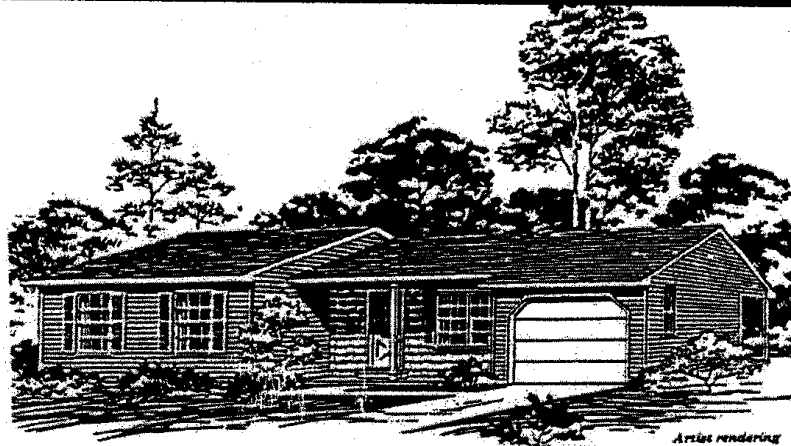




THE KORTLANDT

Luxury in every detail! From a shingle shake covered entry way, to the 21-ft living/dining room, and even enormous twin walk-in closets in the master bedroom. Access direct to interior from garage.





NEWBERRY

Discover this lovely home through the covered portico leading to a charming foyer. An immense 22-Ft. L-shaped living and dining room is served by a kitchen equipped with electric range and lighted range-hood, and a stainless steel sink with multi-lever faucets. The master bedroom has a wall-to-wall sliding door wardrobe. A second bath is available at extra cost. Both bedrooms are cross-ventilated

FLOOR PLAN

